

FlightMax EX500/EX5000 Interactive PC Training DEMO



Installation Guide

3/15/2006

FlightMax EX500/EX5000 Interactive PC Training Demo – Install Guide

Installation

Important: Please review the READ ME file for important information on hardware requirements and software limitations. This software is only approved to run on PCs using Windows XP or Windows 2000.

Note: If any previous version of the EX500 Demo or EX500/EX5000 Demo has been loaded on your machine, go to the “add and remove programs” menu in your Windows Control Panel and uninstall any currently loaded versions. Check to make sure that all previous version files have been removed before loading this program.

Web Download Installation

The demo download Zip file should be saved onto your computer desktop or file that you designated while following the download instructions on the Avidyne website. Unzip the demo file into a dedicated file folder on your PC. When you open the demo file folder you will see an “Avidyne FlightMax” icon similar to the one below.



CD Installation

The disc will self start when inserted into your CD-drive. If AutoRun capability is disabled on your PC, click on the “Start” button in the lower left corner of your screen and select “Run,” then type in: D:/**autorun.exe** (Substitute “D” with correct CD-drive letter.) A menu will appear which will allow you to choose one of the following options:

After either the Web or CD installation loading is complete, a menu will appear which will allow you to choose one of the following options:

FlightMax EX500/EX5000 Interactive PC Training Demo – Install Guide



Installation – Launches the setup application to install the training software on your PC. Also used for uninstalling the software.

Read Me – Opens the ReadMe.TXT file which has important information about this software including hardware requirements and software limitations.

Install Guide – Opens Installation and Operating Instructions in PDF Format.

Pilot's Guide – Opens PDF version of actual FlightMax EX500 Pilot's Guide.

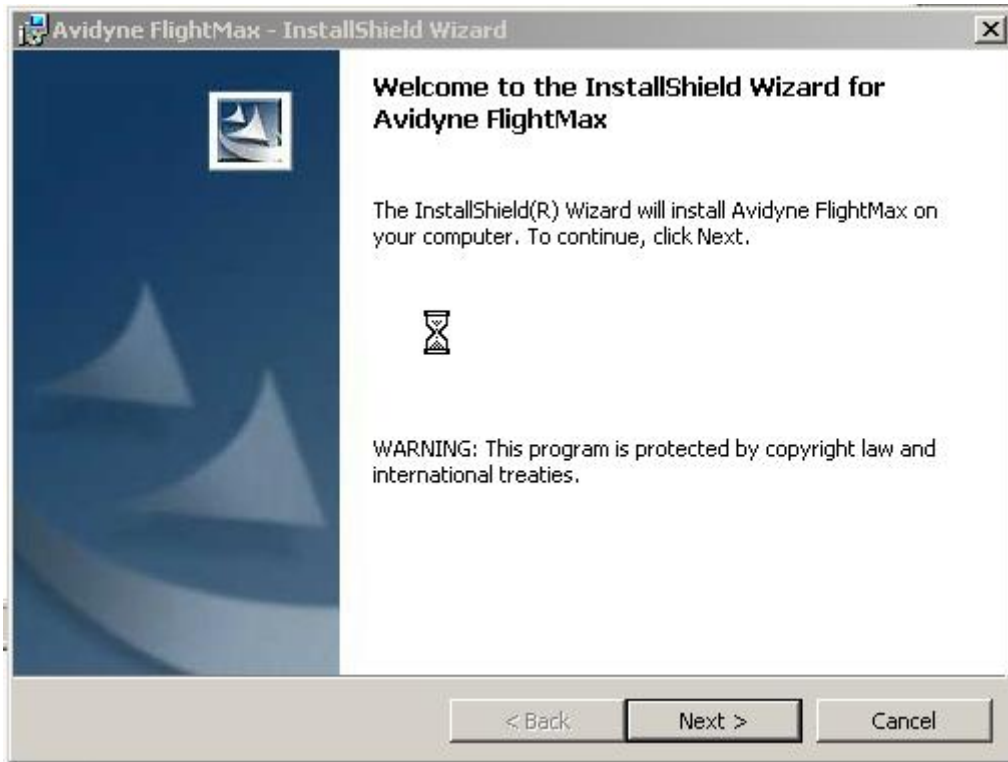
Browse CD – Opens Windows Explorer to view contents of the CD.

Exit – Closes Menu Window.

FlightMax EX500/EX5000 Interactive PC Training Demo – Install Guide

Step by Step Installation Instructions

Double click the Install option to begin the loading process. The InstallShield Wizard will open and prompt you through the install process.

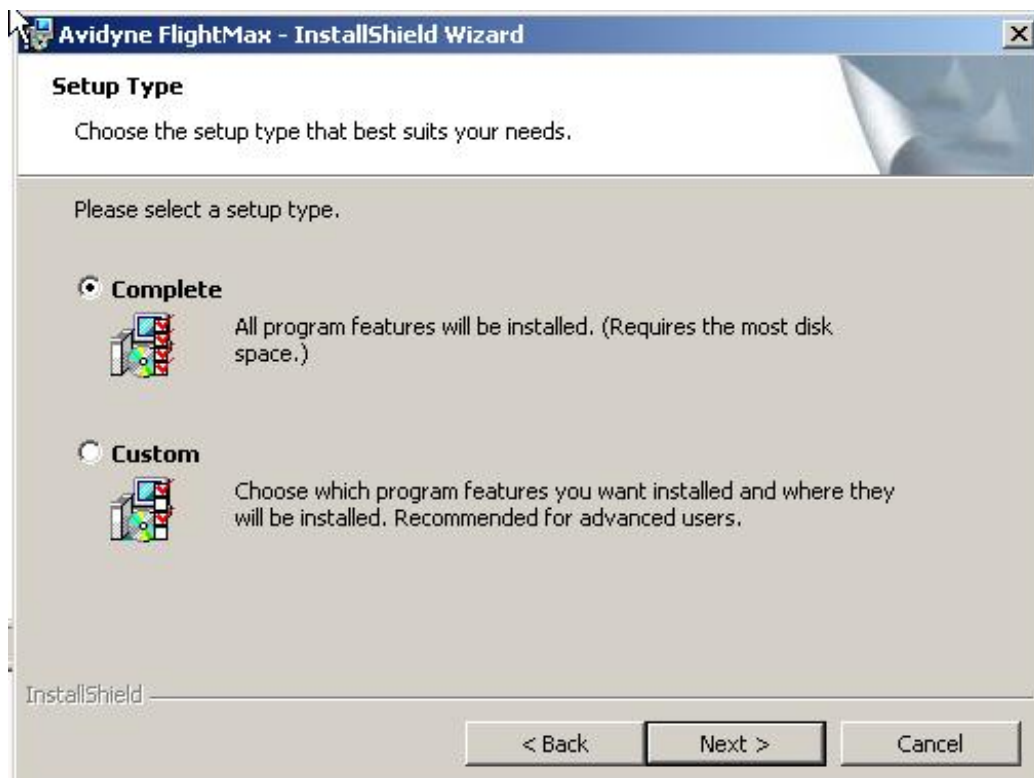


Once the install wizard has loaded, and you have clicked on the “Next >” Tab, the Software License Agreement screen will appear. Please review the terms and conditions of the FlightMax Software License Agreement. If these terms are not acceptable, or do not meet your usage needs please do not load the software. If you have any license questions please contact Avidyne Sales at 781 402-7400. After reviewing the license agreement, please select the “accept terms” button and click on the “Next >” Tab.

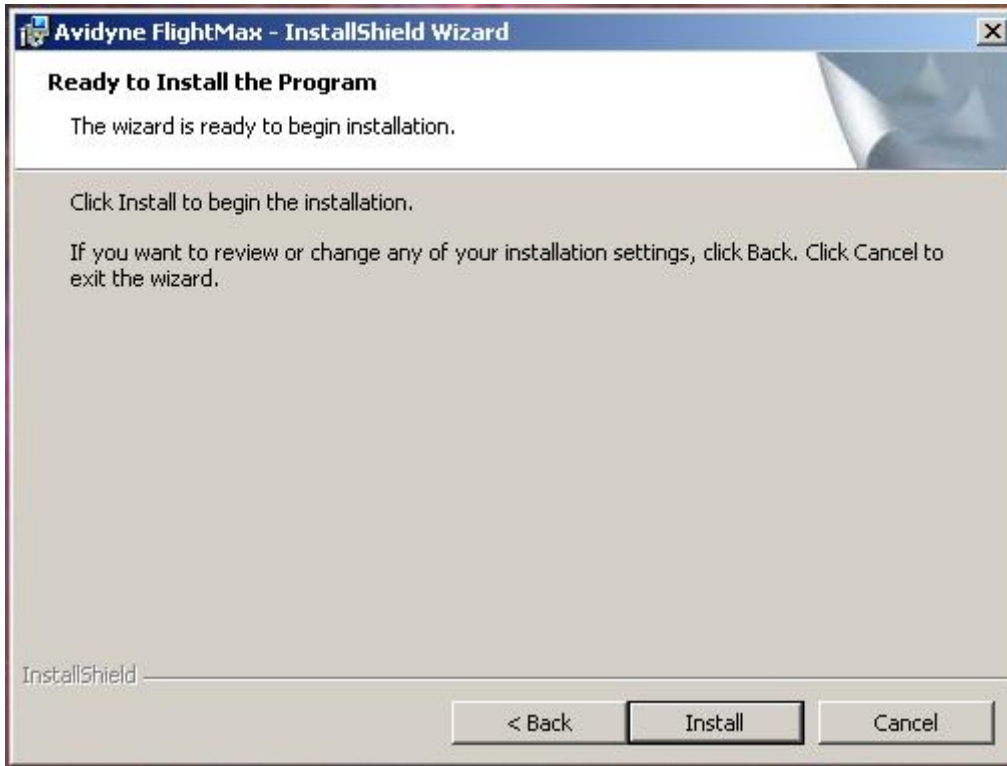
FlightMax EX500/EX5000 Interactive PC Training Demo – Install Guide



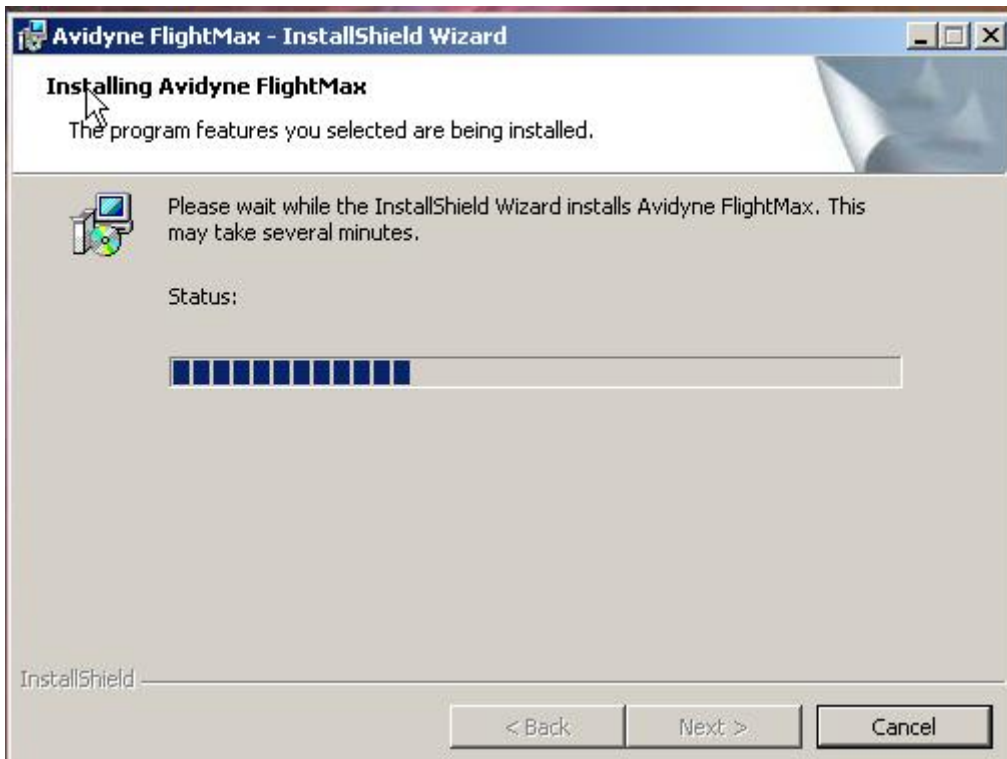
After completing the License Agreement window, the “Setup Type” window will appear. If this is the first time loading the EX500/EX5000 Demo, please select the “Complete” button. Clicking on the “Custom” button will allow you to load the demo program to a different folder on your PC.



FlightMax EX500/EX5000 Interactive PC Training Demo – Install Guide

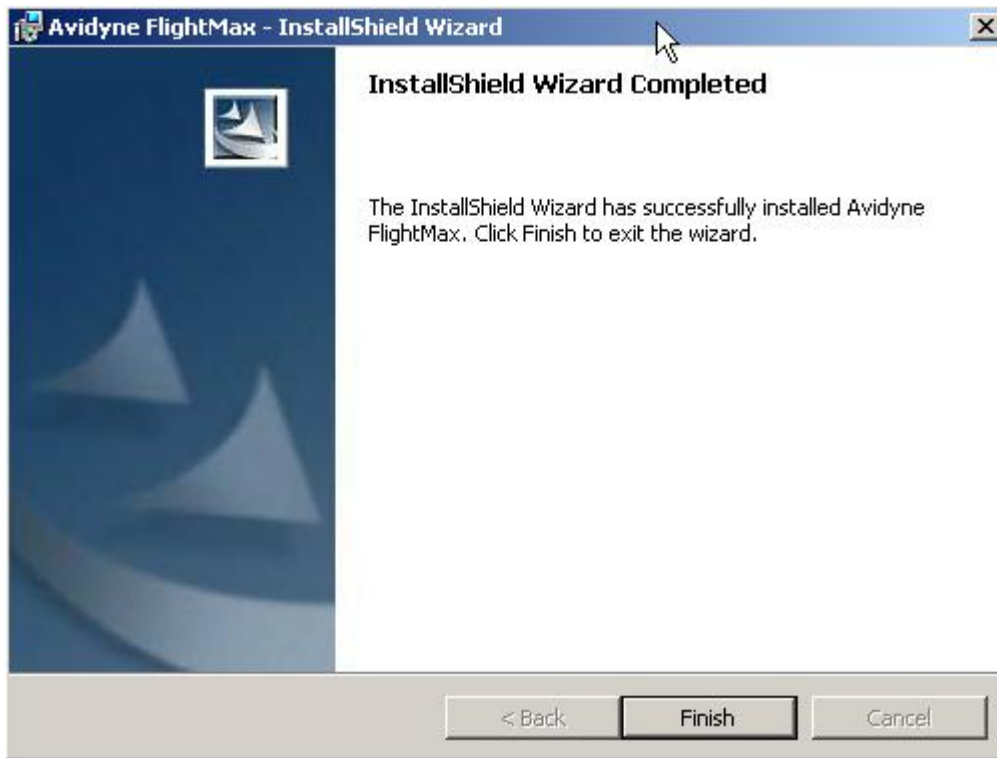


Once you click on the “Next >” Tab, the demo will begin to load. Depending on the demo you chose to load and the speed of your PC, this process may take between 3 and 10 minutes.



FlightMax EX500/EX5000 Interactive PC Training Demo – Install Guide

When the load is complete, the “Completed” Window will appear informing you that the demo has been successfully installed. Click on the “Finish” Tab to close out the Install Shield program.



On your PC Desktop you will notice to new Icons for the EX500/EX5000 Demo.



FlightMax EX500/EX5000 Interactive PC Training Demo – Install Guide

Starting the Software

Locate the FlightMax EX500 or EX5000 icons on your desktop. By double clicking either of these Icons you will open the EX500/EX5000 demo in the version named on the Icon.



Desktop Icons

At startup, the EX500 or EX5000 will appear along with a “MiniGPS” navigation simulator. Allow some time for the software to fully initialize, at which point you will be asked to “Press any bezel key to continue.”



FlightMax EX500/EX5000 Interactive PC Training Demo – Install Guide

Without an active flight plan, both the EX500 and EX5000 Demo will initiate in the Boston Area. You will need to insert a flight plan into the MiniGPS simulator to “fly” either Demo version. You can do this by creating a flight plan.

Create a Flight Plan

To create a flight plan, click on the “Clear All” button to delete any previously-entered flight plan. Then enter the identifier for your Present Position (such as your home airport), then using the “Insert...” button, add additional waypoints as desired. Once you have completed your waypoint list, use the Throttle slider to activate the flight plan. You can rearrange waypoints using the “Up” and “Down” buttons, and you can change the active leg by selecting a waypoint from the list and clicking the “Set Activate” button.

Here’s an example of how to create a flight plan from Granbury Municipal Airport in Texas to Lamar Municipal Airport in Colorado.

- 1) Enter KGDJ into “Present Position” field and click the “Set” button.



FlightMax EX500/EX5000 Interactive PC Training Demo – Install Guide

2) Click on “Insert...” button and enter KLAA in identifier field of Waypoint Lookup window as our destination.



FlightMax EX500/EX5000 Interactive PC Training Demo – Install Guide

3) Insert intermediate waypoints as needed. Click on KGDJ in the waypoint list, and then click the “Insert...” button to add enroute waypoints. In this example, we entered MQP, SPS, LTS, and LBL as intermediate waypoints.



Click on MQP then click the “Select Active” button on the GPS Menu. This will activate the first leg of your flight plan.

FlightMax EX500/EX5000 Interactive PC Training Demo – Install Guide

4) Use the Throttle slider to increase the ground speed (or type in a specific speed into the adjacent window).



5) Use the Page Knob to switch to the Trip Page to view the Text METARs at your destination or at any waypoint along your route.

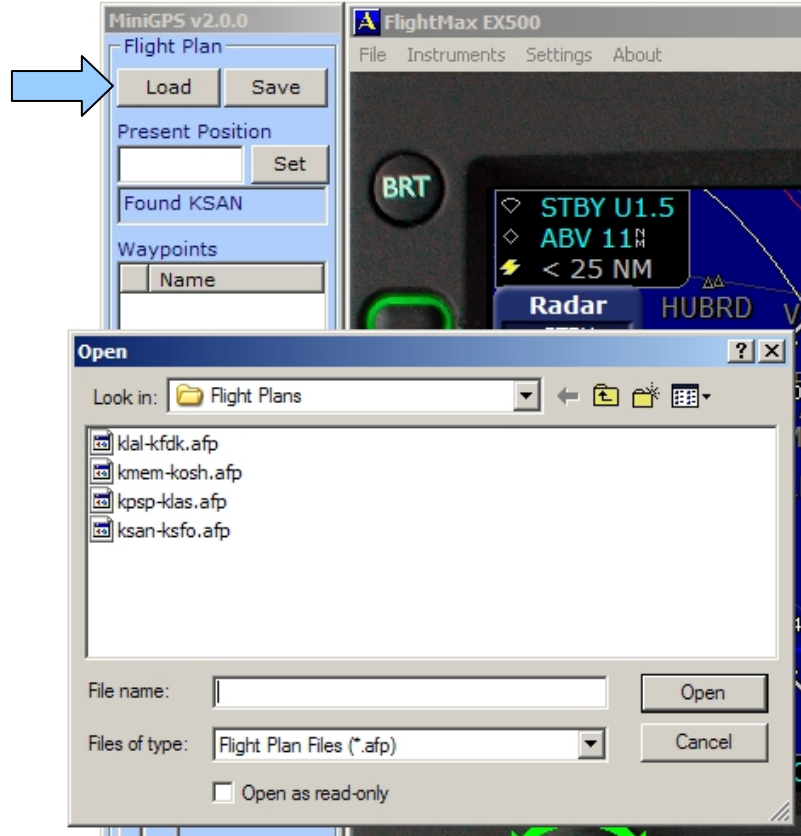
Load an existing Flight Plan

The EX500 Trainer comes with four sample flight plans:

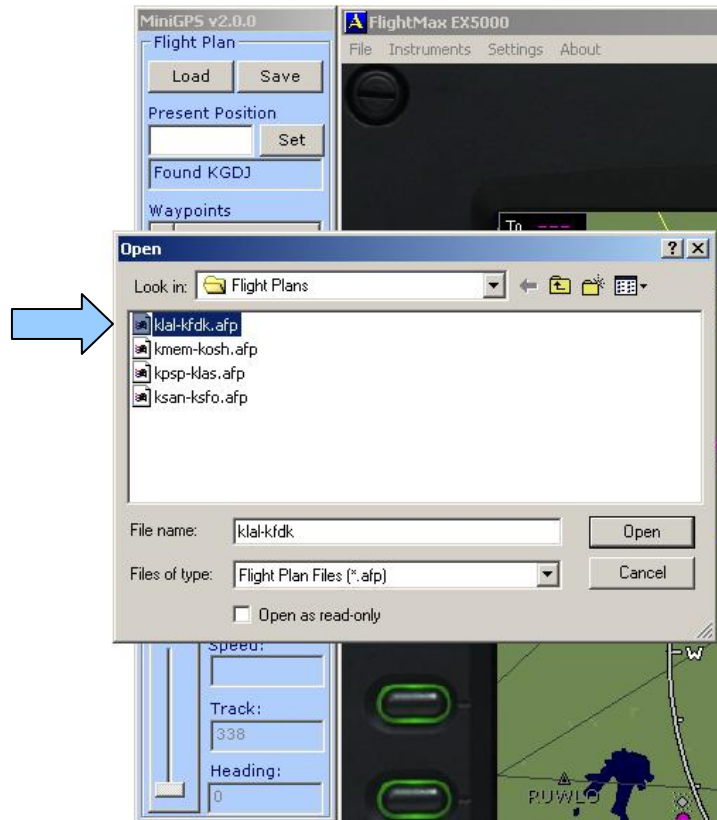
- KLAL-KFDK – Lakeland, FL to Frederick, MD
- KMEM-KOSH – Memphis to Oshkosh
- KPSP-KLAS – Palm Springs to Las Vegas
- KSAN-KSFO – San Diego to San Francisco

To load one of these flight plans, click on the “Load” button on the MiniGPS and a window will pop up with a list of the stored flight plans. (We will discuss later how you can also save your own flight plans, which can be added to this list for future call up.)

FlightMax EX500/EX5000 Interactive PC Training Demo – Install Guide



In this case, we selected KLAL-KFDK and click “Open”



FlightMax EX500/EX5000 Interactive PC Training Demo – Install Guide

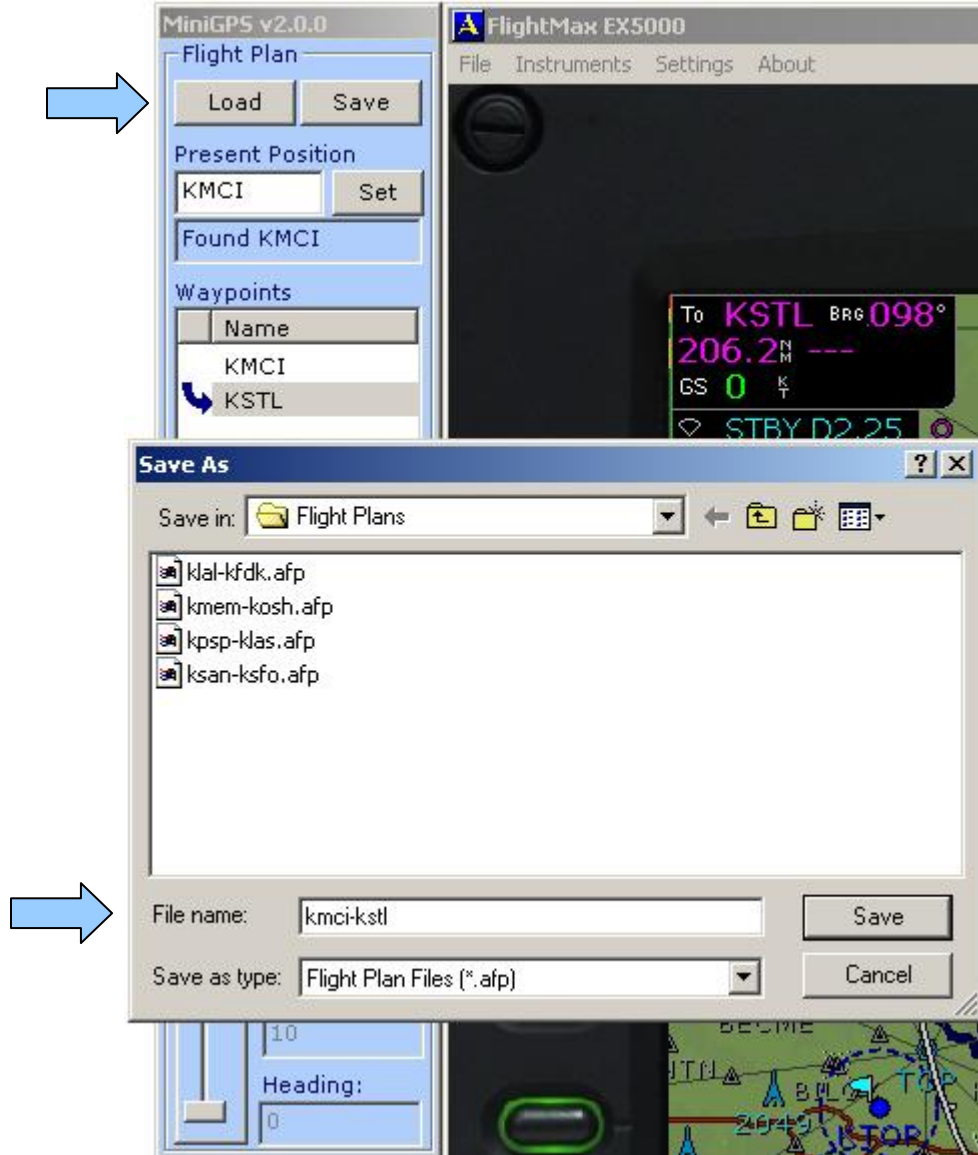
The EX500/EX5000 Map will be repositioned at KLAL and the flight plan will appear. Demo versions of Datalink weather including METARs, NEXRAD, AIRMET/SIGMETs, and TFRs will appear all along the route. Do not forget to add some speed to your aircraft to begin the simulation.



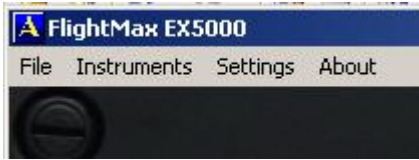
You are now “flying” the EX500/EX5000 Demo Trainer. With few exceptions, this software emulates the FlightMax systems just as it would operate in your aircraft. Reference the FlightMax EX500 or EX5000 Pilot’s Guides for unit operation. A PDF version of both guides is available on the CD and on-line at www.avidyne.com. If you need to reconfigure the Software to reflect the sensors you have in your aircraft, use the “Settings” menu.

Save a Flight Plan

To save a user-created flight plan for future reference, click the “Save” button and type in a file name then click “Save.” In this case we will save the file as “kmci-kstl.afp”.



Menu Options & Settings

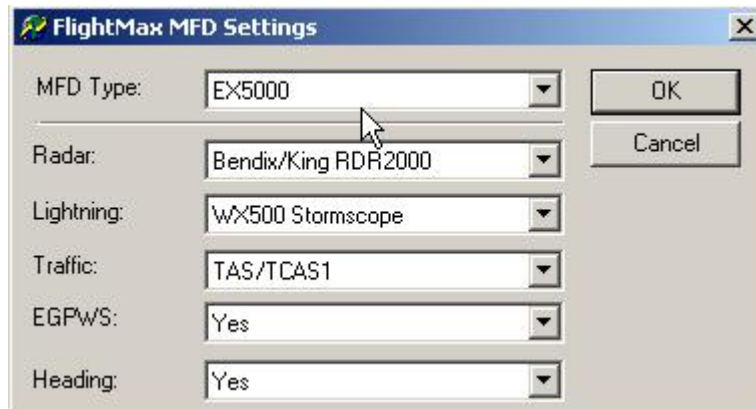


File – This Menu option is used to Exit the training session and close the software. You can also click on the “X” in the upper right corner of the window to Exit.

Instruments – Turn the “MiniGPS” window on and off.

Settings – Use this menu to change the System Configuration of the EX500 Trainer. Changing the Settings requires a software restart for the changes to take effect.

About



MFD Type – The MFD Type selection lets you chose between displaying an EX500 and an EX5000. Please note that the software will need to restart when this change is selected and that the EX5000 needs a PC screen size of at least 1080 X 1024 to operate properly.

Radar – The default setting is for Bendix/King RDR2000. If you fly an aircraft that does not have on-board weather radar, change this setting to “No Radar,” and after restart, the EX500/EX5000 training software will be reconfigured to the non-radar version. The EX5000 supports the RDR 2000 radar, while the EX500 supports 19 different radar models, but for the purpose of this trainer, we are using the RDR2000 simulation, which includes most modes of operation.

Lightning – The default setting is for WX500 Stormscope, which enables the lightning sensor simulator. If your aircraft does not have a WX500, you can change this setting to “None” and the EX500/EX5000 training software will be reconfigured to not show the lightning symbols or control functions.

FlightMax EX500/EX5000 Interactive PC Training Demo – Install Guide

Traffic – The default setting is for TAS/TCAS1 which enables the traffic simulator. You can also select TCAD as an option if your aircraft is so configured. If your aircraft does not have a traffic sensor, you can change this setting to “None” and the EX500/EX5000 training software will be reconfigured to not show the traffic symbols or control functions.

EGPWS – The default setting is “Yes” for EGPWS which enables the TAWS/Ground Prox simulator. If your aircraft does not have a TAWS sensor, you can change this setting to “None” and the EX500/EX5000 training software will be reconfigured to not show the dedicated TAWS page or control functions.

Heading – The default setting is “Yes” for Heading which enables the EX500 or EX5000 to orient in a heading up mode. If your aircraft does not have magnetic heading available, you can change this setting to “None” and the EX500 training software will be reconfigured to show the map in “Track UP” rather than “Heading Up.” Typically, if you have a WX500 Stormscope or a TAS system, you probably have a heading source, so you can leave this set to “Yes” in most cases. Without a heading source, the EX500/EX5000 will not overlay WX radar on the map.

About – Information about this product including copyright, software revision level and disclaimer.

