

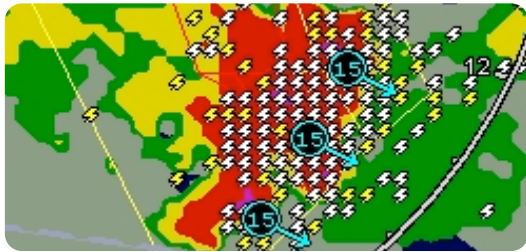
Release 6 Upgrade For Columbia Aircraft



EX5000 MFD Release 6 Upgrade Package

Entegra Release 6 is a significant software upgrade for your EX5000 MFD and includes new software features as well as new XM weather services. New software features include:

- Support for USB Flash Memory Drives to update Navigation data and download engine logs, eliminating the need for ZIP drives
- Nearest airports to current position and nearest airports to destination selections are available on the Nearest Page
- Single touch selection of CMax™ Electronic Charts from Nearest Page and Trip Page



Winds Aloft for KCRQ

FL030	---	FL240	92° at 32 kts
FL060	125° at 9 kts	FL270	96° at 38 kts
FL090	129° at 7 kts	FL300	103° at 46 kts
FL120	102° at 10 kts	FL330	109° at 54 kts
FL150	102° at 18 kts	FL360	112° at 60 kts
FL180	95° at 23 kts	FL390	112° at 60 kts
FL210	91° at 27 kts	FL420	104° at 56 kts

Freezing Level Forecast at 13100 ft

Terminal Aerodrome Forecast (TAF) for KCRQ

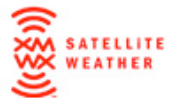
```
100527Z 100606 28005KT P6SM SCT003
TEMPO 0709 1/2SM FG BKN002
FM0900 13005KT 1/2SM FG BKN001
TEMPO 1014 1/4SM FG VV001
FM1600 15005KT 3SM HZ SCT003
FM1800 24008KT P6SM SKC
FM0200 04005KT P6SM SKC
```

EX5000 MFD XM WX Upgrades

Entegra Release 6 adds new XM WX features in addition to its current support of NEXRAD, Lightning, Graphical METARs, Plain English METARs, AIRMETS, SIGMETS and TFRs.

New XM WX features include:

- XM WX Storm Track Vectors display a storm cell's ground speed in knots and direction of travel on top of a NEXRAD generated storm cell
- XM WX Hail Warning alerts the pilot to a greater than 50% chance of hail within a storm cell by changing the Storm Track Vector from black to white
- XM WX Winds Aloft are displayed on the Trip Page for current position and flight plan waypoints
- XM WX Freezing level is displayed on the Trip Page along with the Winds Aloft
- XM WX TAFs display forecasts on the Trip Page for nearest to current position or designated flight plan waypoints



Entegra EX5000 MFD Release 6 Pricing and Ordering Information for Columbia Aircraft

- Entegra EX5000 MFD upgrade to Release 6 - \$235 (plus installation).
- This upgrade can be ordered and installed by an Avidyne Dealer or Columbia Service Center.
- Pricing does not include service center charges for removal, reinstallation, calibration, labor or shipping.

AVIDYNE CORPORATION
 55 Old Bedford Road
 Lincoln, MA 01773
 Toll Free: 800-AVIDYNE