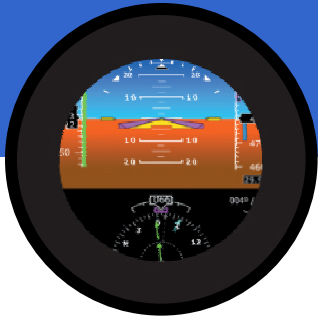




Release 6 Upgrade For Cirrus Aircraft



Entegra Release 6 is a significant upgrade to both your EXP5000 PFD and EX5000 MFD. It is designed to improve the quality and extend the life of your Entegra system, and includes the latest software releases and all field upgrade hardware modifications.

The Flight Director plus Release 6 package offers an exceptional value by combining all of the Release 6 upgrades with the benefits of flying with a Flight Director all for one great price. The Entegra Flight Director:

- Enhances precision approach flying as command bars direct the pilot down the localizer and glideslope, and on missed approach, guide the pilot through the required climb and turn.
- Reduces pilot workload by eliminating the need to scan both the Attitude Indicator (AI), and Horizontal Situation Indicator (HSI) as the Flight Director command bars display visual cues from both
- Improves flying efficiency and smoothness as the pilot simply maneuvers the aircraft to the Flight Director's steering command bars following a pre-computed flight path



Entegra EXP5000 PFD

Release 6 EXP5000 PFD Upgrades

- Vspeed Label for Vg (Best Glide) displayed on the Indicated Airspeed Tape*
- Selectable "Flight Director Wedge" or Standard "W" Aircraft Reference Display*
- Horizon Heading Reference Marks display Cardinal headings on the horizon*
- Enhanced Autopilot Annunciations
- Improved mode support for the STEC 55X autopilot
- HSI range and view settings persist for next flight
- Enhanced low speed awareness logic replaces red with white airspeed tape on takeoff roll and landing rollout
- Improves fittings and connectors to better withstand the vibration and rigors of normal flight operations
- Internal component upgrades that improve integration with aircraft systems and better protect the PFD from electrical system power surges

* These features turned on or off by your dealer

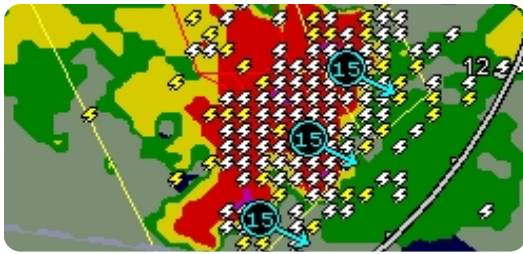
EX5000 MFD Software and Hardware Upgrades

- XM WX TAFs are available on the Trip Page
- XM WX Winds Aloft are displayed on the Trip Page
- XM WX Freezing level is displayed on the Trip Pages
- XM WX Storm Track Vectors (direction and speed) are available on NEXRAD display
- XM WX Hail alerts are displayed on the NEXRAD Storm Track Vectors
- Support for USB Flash Drives to update Navigation data and download engine logs, eliminating the need for ZIP drives
- Nearest airports to current position and nearest airports to destination selections are available on the Nearest Page
- Single touch selection of CMax™ Electronic Charts from Nearest Page and Trip Pages



Entegra EX5000 MFD





Winds Aloft for KCRQ

| | | | |
|-------|----------------|-------|----------------|
| FL030 | --- | FL240 | 92° at 32 kts |
| FL060 | 125° at 9 kts | FL270 | 96° at 38 kts |
| FL090 | 129° at 7 kts | FL300 | 103° at 46 kts |
| FL120 | 102° at 10 kts | FL330 | 109° at 54 kts |
| FL150 | 102° at 18 kts | FL360 | 112° at 60 kts |
| FL180 | 95° at 23 kts | FL390 | 112° at 60 kts |
| FL210 | 91° at 27 kts | FL420 | 104° at 56 kts |

Freezing Level Forecast at 13100 ft

Terminal Aerodrome Forecast (TAF) for KCRQ

```

100527Z 100606 28005KT P6SM SCT003
TEMPO 0709 1/2SM FG BKN002
FM0900 13005KT 1/2SM FG BKN001
TEMPO 1014 1/4SM FG W001
FM1600 15005KT 3SM HZ SCT003
FM1800 24008KT P6SM SKC
FM0200 04005KT P6SM SKC
  
```

XM WX Upgrades for the EX5000 MFD

Entegra Release 6 adds new XM WX features in addition to its current support of NEXRAD, Graphical METARs, Plain English METARs, AIRMETS, SIGMETS, TFRs, and Datalinked Lightning.

New XM WX features include:

- XM WX Storm Track Vectors display a storm cell's ground speed in knots and direction of travel on top of a NEXRAD generated storm cell
- XM WX Hail Warning alerts the pilot to a greater than 50% chance of hail within a storm cell by changing the Storm Track Vector from black to white
- XM WX Winds Aloft are displayed on the Trip Page for current position and flight plan waypoints
- XM WX Freezing level is displayed on the Trip Page along with the Winds Aloft
- XM WX TAFs display forecasts on the Trip Page for nearest to current position or designated flight plan waypoints



Entegra Release 6 Pricing for Cirrus Aircraft

BEST VALUE

Special Flight Director Upgrade Package

With this special **Flight Director Upgrade Package** you get the complete Release 6 upgrade for both your EXP5000 PFD and EX5000 MFD included in the price of your Flight Director upgrade. If your warranty has expired, you will receive an additional 6 months of warranty coverage

- *Entegra* Systems under new product warranty or with Flex Service Program - \$1,495 (plus installation)
- *Entegra* Systems not under warranty (over 2 years old) - \$1,995 (plus installation)

Entegra Release 6 Standard Upgrade Package

With the **Standard Release 6 Upgrade Package** you receive upgrades for both your EXP5000 PFD and EX5000 MFD. If your warranty has expired, you will receive an additional 6 months of warranty coverage

- *Entegra* Systems under new product warranty or with Flex Service Program - \$495 (plus installation)
- *Entegra* Systems not under warranty (over 2 years old) - \$995 (plus installation)

Entegra EX5000 MFD (only) Release 6 Upgrade Package

For Cirrus owners with only the EX5000 MFD installed, this upgrade package enables all the new features of Release 6 on your EX5000 MFD

- *Entegra* EX5000 MFD only upgrade to Release 6 - \$200 (plus installation)

Ordering Information

The *Entegra* Release 6 upgrade can be ordered directly from your Avidyne Dealer or *Cirrus Service Center* at the prices listed above. The EXP5000 PFD needs to be removed by your dealer and sent to Avidyne's support center for the software and hardware upgrades. The EX5000 MFD upgrade can be completed by your dealer. Prices quoted here do not include Dealer's installation charges.

The EXP5000 software and hardware upgrades will be completed at the Avidyne factory service center. Avidyne will schedule appointments through your dealer for the service. We request that you find a time that is convenient for you and your aircraft during normal maintenance. Please have your dealer call Avidyne at 1-800-284-3963 to schedule your upgrade. Pricing does not include service center charges for removal, reinstallation, calibration, labor or shipping.



AVIDYNE CORPORATION

55 Old Bedford Road
Lincoln, MA 01773
Toll Free: 800-AVIDYNE
FAX: 781-402-7599
www.avidyne.com

